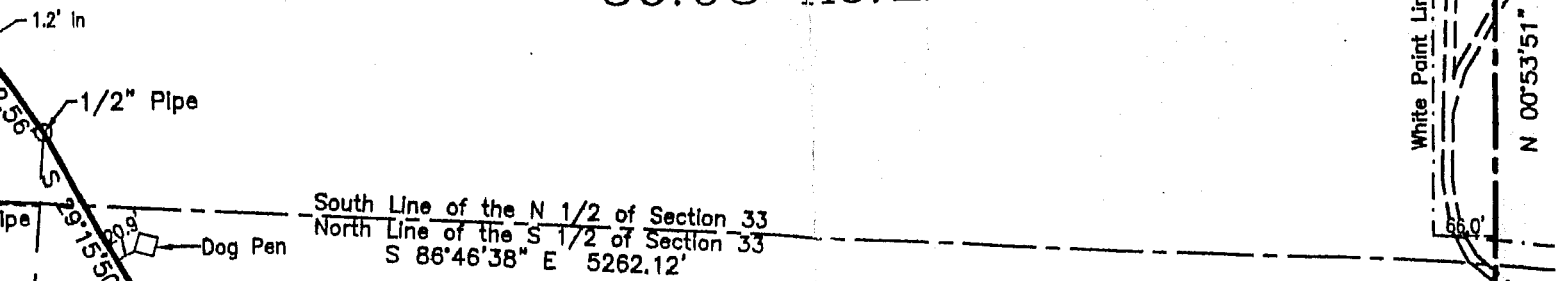
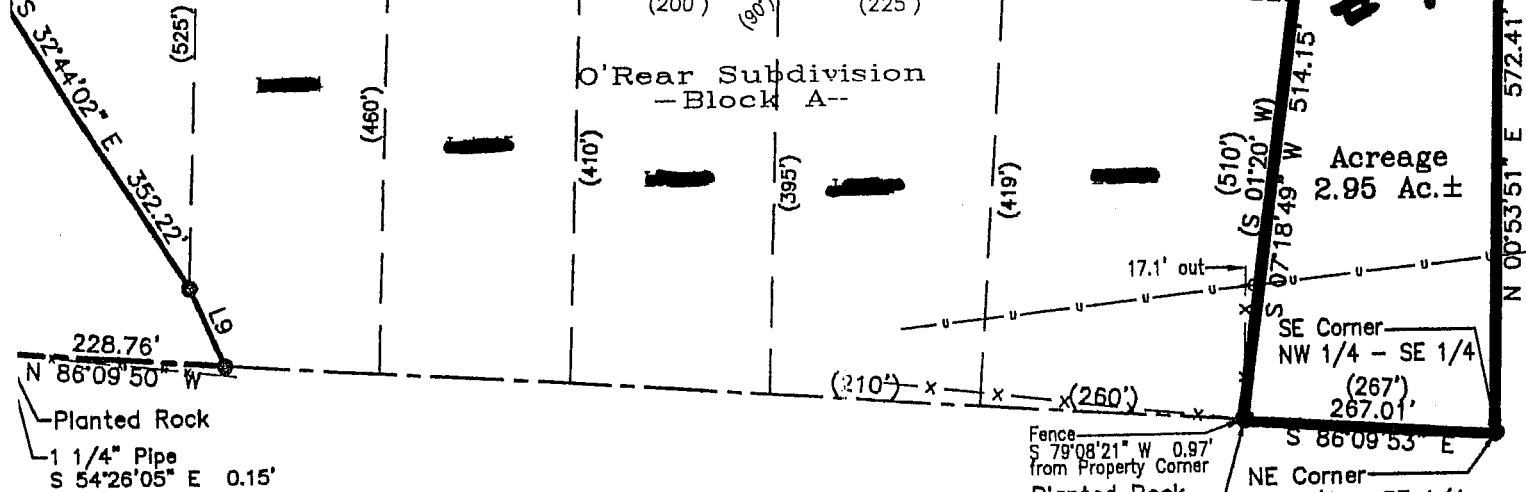
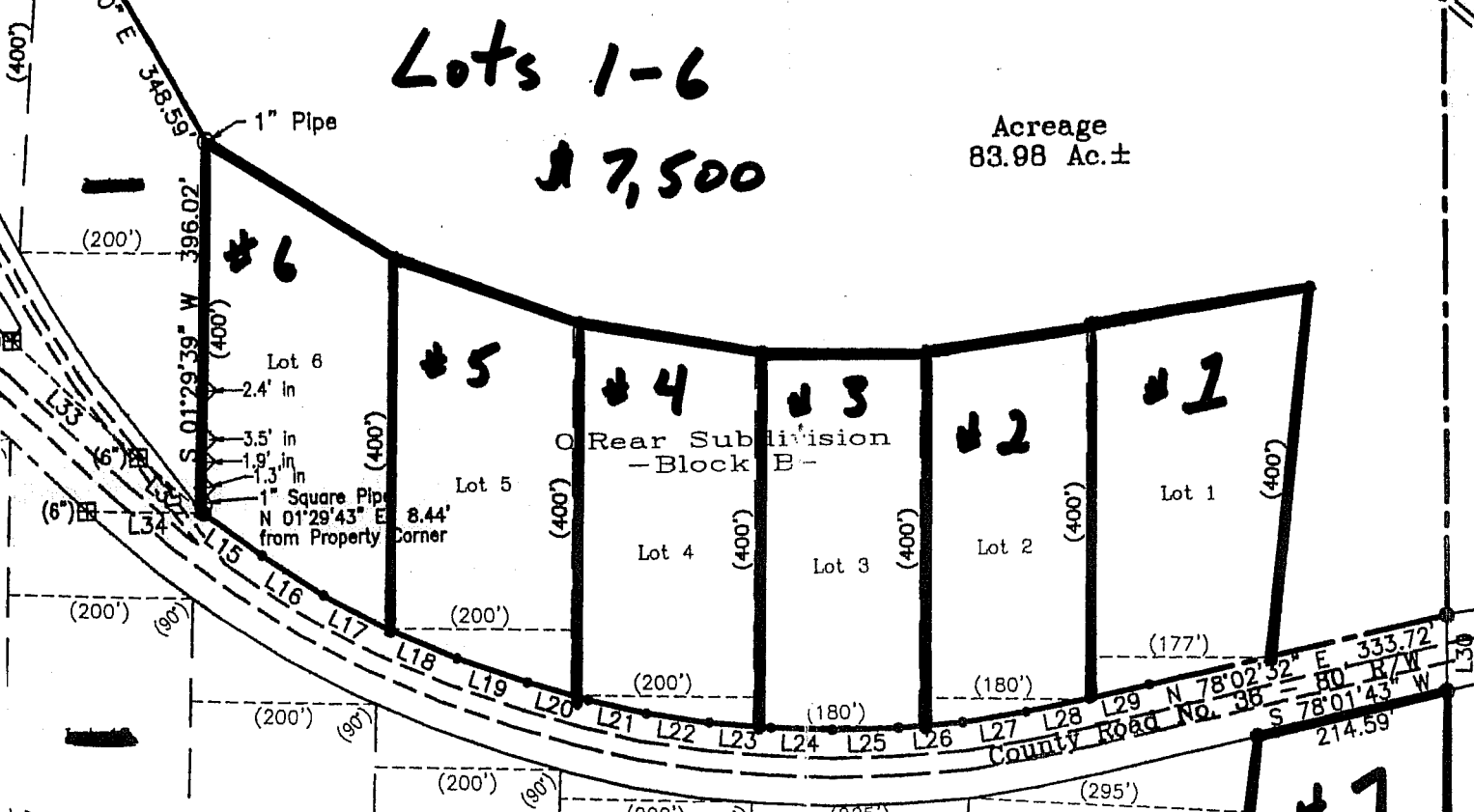


86.93 Ac. ±



Lots 1-6
\$ 7,500

Acreage
 83.98 Ac. ±



Lot # 7
\$ 10,000

SE Corner
 NW 1/4 - SE 1/4
 (267')
 267.01'
 S 86°09'53" E

NE Corner
 SW 1/4 - SE 1/4
 Sec. 33, T.11S., R.12W.
 Marlon County, Alabama

